

#### READ ME FIRST:



Thank you for purchasing a Front Runner Slimline II Rack.

This Roof Rack consists of a kit that contains:

- 1.) A Slimline II Tray
- 2.) A mounting system specific to your vehicle

This document will help you fit the Slimline II Tray to your specific vehicle.

### IMPORTANT WARNING!

IT IS CRITICAL THAT ALL FRONT RUNNER PRODUCTS BE PROPERLY AND SECURELY ASSEMBLED AND ATTACHED TO YOUR VEHICLE. IMPROPER ATTACHMENT COULD RESULT IN AN AUTOMOBILE ACCIDENT, AND COULD CAUSE SERIOUS BODILY INJURY OR DEATH TO YOU OR TO OTHERS. YOU ARE RESPONSIBLE FOR ASSEMBLING AND SECURING ALL FRONT RUNNER PRODUCTS TO YOUR VEHICLE, CHECKING THE ATTACHMENTS PRIOR TO USE, AND PERIODICALLY INSPECTING THE PRODUCTS FOR ADJUSTMENT, WEAR, AND DAMAGE. THEREFORE, YOU MUST READ AND UNDERSTAND ALL OF THE INSTRUCTIONS AND CAUTIONS SUPPLIED WITH YOUR FRONT RUNNER PRODUCT PRIOR TO INSTALLATION OR USE. IF YOU DO NOT UNDERSTAND ALL OF THE INSTRUCTIONS AND CAUTIONS, OR IF YOU HAVE NO MECHANICAL EXPERIENCE AND ARE NOT THOROUGHLY FAMILIAR WITH THE INSTALLATION PROCEDURES, YOU SHOULD HAVE THE PRODUCT INSTALLED BY A PROFESSIONAL INSTALLER OR OTHER QUALIFIED PERSONNEL.



The Foot Rail Mounting Kit (FAVT001) that you have received is suitable for mounting a Half Rack (1255 x 1156 mm) or Full Rack (1255 x 1964 mm). If you have chosen to mount a Half Rack not all of the components supplied will be used. It is suggested that all additional components be stored for use at a later stage should you wish to upgrade to a Full Rack.

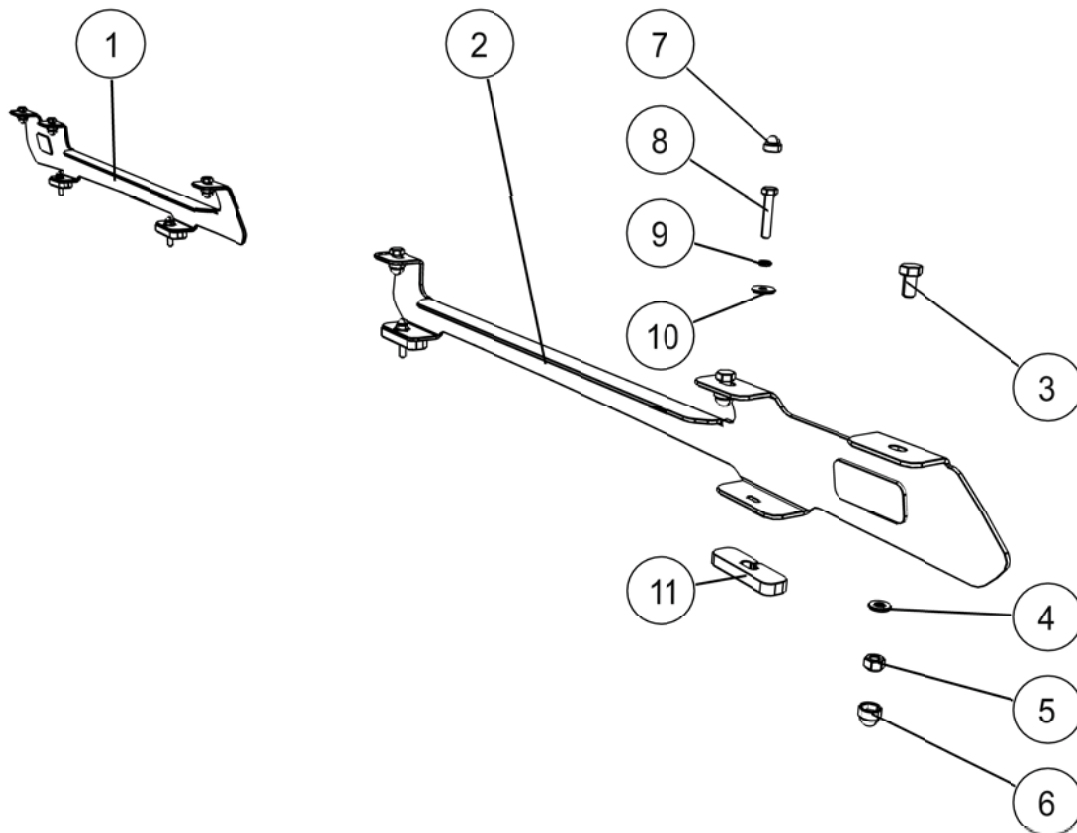
# 1 GET ORGANIZED...

Here is what you are looking at: Please note that only the right hand side's components and fitment has been shown.

Item #	Quantity	Description
1	2	FOOT RAIL FRONT
2	2	FOOT RAIL REAR
3	12	M8x16 HEX HEAD BOLT
4	12	M8 FLAT WASHER
5	12	M8 NYLOC HEX NUT
6	12	M8 NUT CAP
7	8	M6 NUT CAP
8	8	M6x35 HEX HEAD BOLT
9	8	M6 SPRING WASHER
10	8	M6x19x1.2 FLAT WASHER
11	8	SPACER

### You will need:

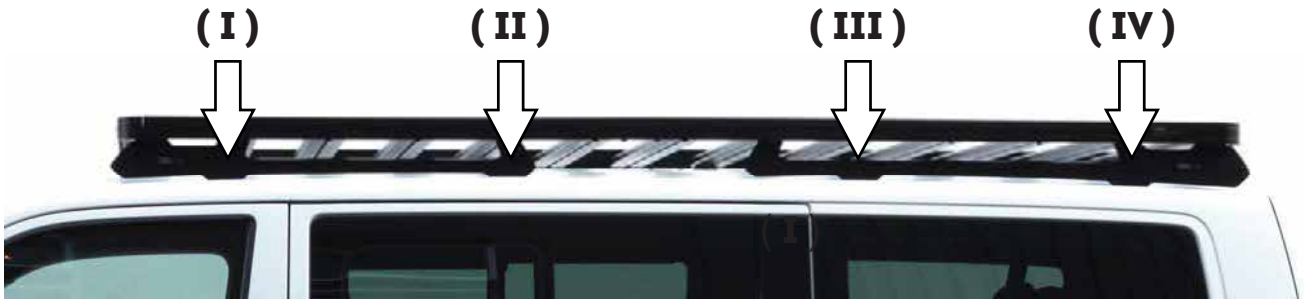
- 13 mm Flat or Socket Wrench
- 10 mm Flat or Socket Wrench
- 4 mm Hex Key
- Measuring Tape
- Sealant



**(A)** Familiarize yourself with the parts and then step away from the work area and read through these instructions from beginning to end. Take a moment as a little prep now may save you a lot of time later.

## 2 FIT THE FOOT RAILS

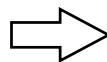
- (A)** If you are installing a Full Rack remove all the OEM Plastic Button Head Bolts, but if you are installing a Half Rack Remove the rear Bolts (III and IV) on the left and right hand side of the vehicle.



- (B)** Use a 4mm Hex Key to remove the above identified Bolts from the roof channel.



- (C)** Clean the area around each of the threaded mounting points and apply a silicone bead on each point. Place a Spacer (Item 11) over each of the mounting points. The Spacers are symmetrical therefore it does not matter which way round you place the spacer into the Channel.



## 2 FIT THE FOOT RAILS CONT...

- (D)** Place the Foot Rails onto the vehicle's roof, lining up the mounting holes in the bottom of the Foot Rails with the mounting points on the vehicle. The Product Stickers must face outwards from the vehicle as indicated below.

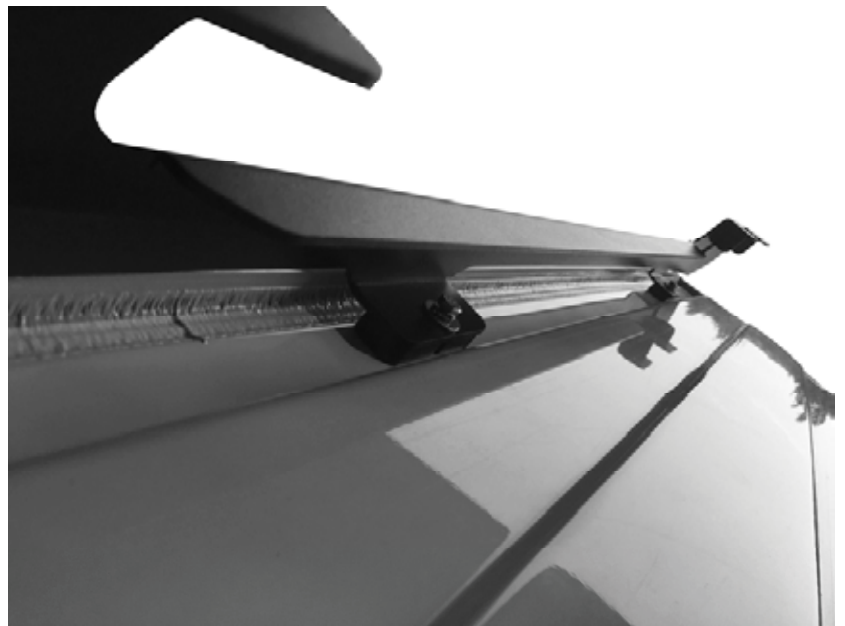
Front Product Sticker

Rear Product Sticker



- (E)** Secure the Rear Foot Rails to the vehicle with four of the supplied M6 x 35 Hex Bolts, four M6 Spring Washer and four M6 x 19 Flat Washers (Items 8, 9 10).

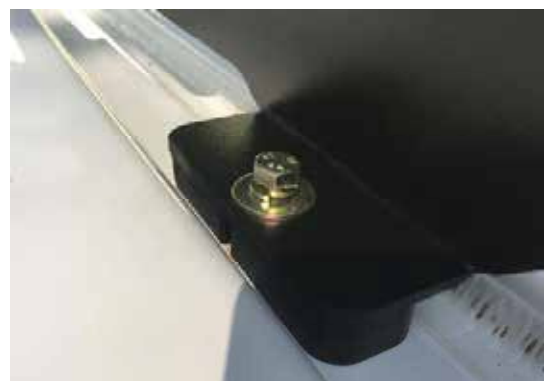
Place a M6 Nut Cap (Item 7) over each Bolt Head once fastened.



- (F)** Secure the Front Foot Rails to the vehicle with four of the supplied M6 x 35 Hex Bolts, four M6 Spring Washer and four M6 x 19 Flat Washers (Items 8, 9 10).

Place a M6 Nut Cap (Item 7) over each Bolt Head once fastened.

Now that the foot rails are installed, move onto assembling your rack.

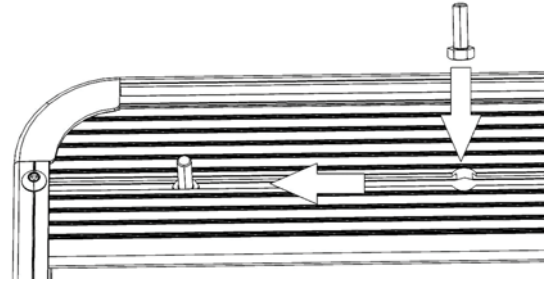


### 3 FIT THE RACK



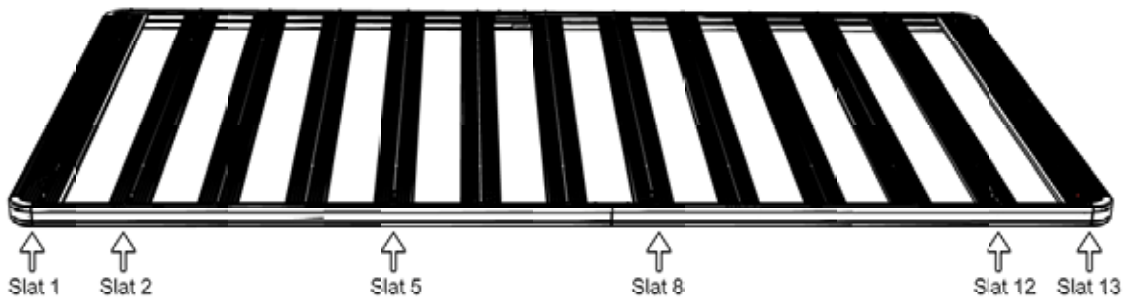
**Note:** If your Slimline II Tray is not already assembled, assemble it as per the Slimline II Tray Universal Assembly Instruction (Document RRSUNI). Read Step 3A before fitting the Wind Deflector

- (A)** Before fitting the Wind Deflector, and with the Rack in the upside down position, (Check that the product sticker. It should be upside down), slide a M8 x 20 Hex Bolt (Item 3) into each end of the First Slat using the machined slot as shown.

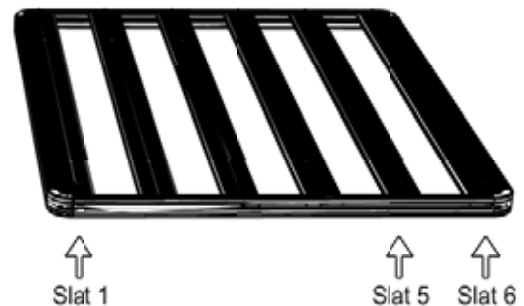


- (B)** With your Rack still upside down position from Step 3A, slide a M8 x 20 Hex Bolt (Item 3) into either end of each of the following Slats as per the diagrams below.

Full Rack KRVK005T



Half Rack KRVK004T



### **3 FIT THE RACK CONT...**

- (C)** Grab your Friend and with one of you on each side of the Rack, flip the Rack end over end (This prevents the Hex Bolts from falling out of the machine slots) so that the M8 x 20 Hex Bolts are facing down. Approach the vehicle from the rear, with the Wind Deflector facing forward. Lift the Rack up and over the Roof, positioning it above the Foot Rail. Bring the Rack down slowly, lining up the Bolts in the Rack with the holes in the top of the Foot Rail. Hand tighten the Rack to the Foot Rail using the M8 Washers and M8 Nyloc Nuts (Items 4 & 5) supplied.

Center the rack - left to right (check using a tape measure). Fasten all the Nuts securing the Rack to the Foot Rail. Cover the M8 Nyloc Nuts with the M8 Nut Caps (Item 6) supplied.



Congratulations, you have completed your installation. Take a step back and admire your work. Good Job!

### **4 TAKE A TRIP**

- (A)** After your first adventure, check that all nuts, bolts, screws and fittings are tight. Re-tighten where needed. You'll find a small amount of settling has happened.

Go on many more adventures, periodically checking all nuts, bolts, screws and fittings.



Front Runner can not recommend a maximum load carrying capacity. Please refer to your vehicle manufacturer's recommendations.

### **5 INSTALL OTHER VEHICLE AND RACK ACCESSORIES**

- (A)** Now's the time to visit your favorite Front Runner dealer in person or online.