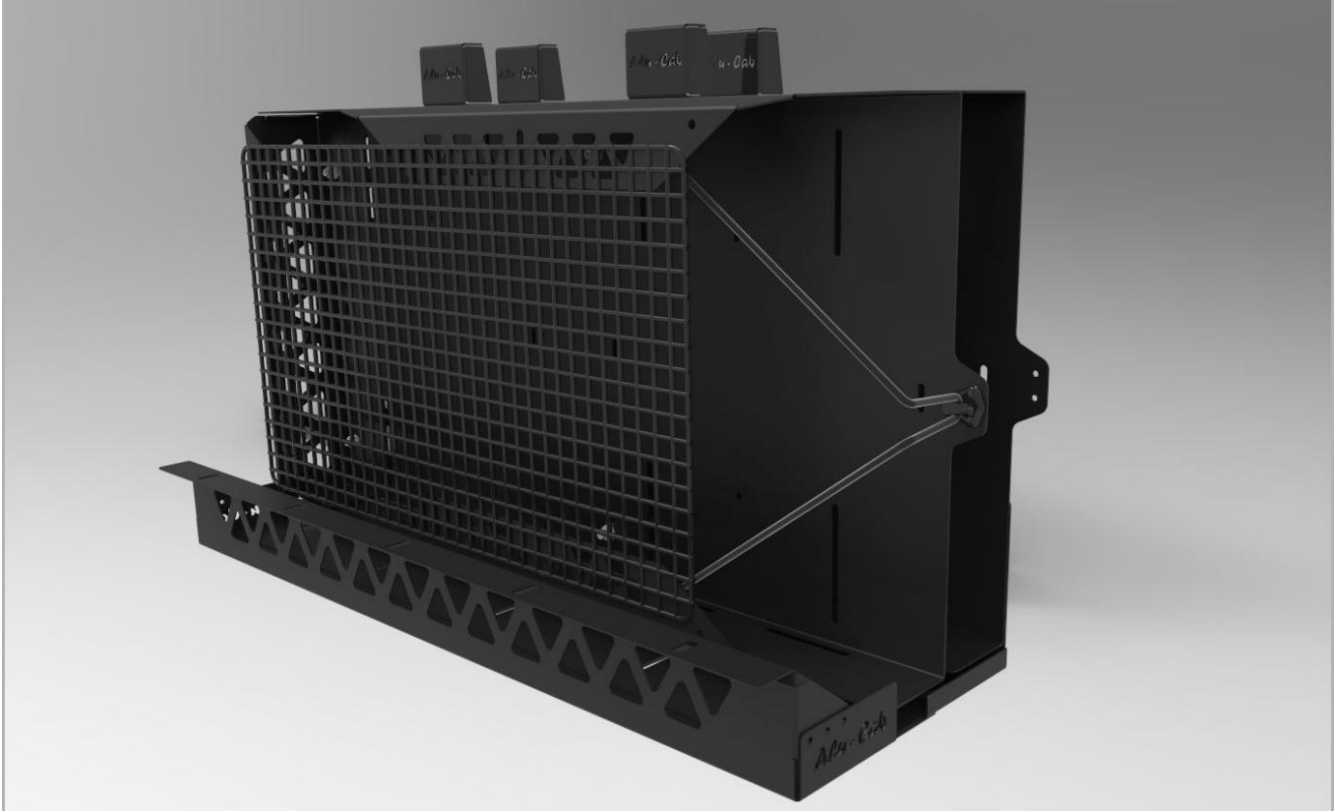


FITMENT INSTRUCTIONS

Alu-Cab™



Side Chair Carrier

All rights reserved. No part of this document may be reproduced, translated, stored in a retrieval system, or transmitted, in any form or by any means, electronic, mechanical, photocopying, recording or otherwise, without prior written permission of the owner.

Review all instructions information carefully before installation.

Any damages, direct or incidental to the installer and/or property due to incorrect installation of any parts are the responsibility of the installer. Due to the various applications and fitment options available, the responsibility lies with the user to ensure all mounting points are secure and tight before every trip. If unsure, consult with your Distributor regarding the operations of our products.

Users are advised to be mindful of the load they are carrying and drive in accordance with road conditions.

DISCLAIMER

Alu-Cab

1. Side Chair Carrier Fitment- Fasteners & Components

The tables below show the equipment, fasteners and hardware required to complete the Fitment of the Alu-Cab Side Chair.

Hardware supplied with the Side Chair Carrier Kit:

Side Chair Carrier		
PartNo	Description	Qty
Complete Side Chair Carrier Assembly	Complete Side Chair Carrier Assembly	1
Complete Side Chair Carrier Double Kit Assembly	Complete Side Chair Carrier Double Kit Assembly	1
M8_Bolt x 16	M8_Bolt x 16	6
M8x16 Flat Washer	M8x16mm Flat Washer	12
M8 Nyloc Nut	M8 Nyloc Nut	12
M8 Nut Cap	M8 Nut Cap	8
M8x20 Hex Bolt	M8x20 Hex Bolt	4
403-BOT-MNT-BRKT-01-00	Cupboard Mounting Bracket	2
M8x16 Cup Square Bolt	M8x16 Cup Square Bolt	4



WARNING

Always wear appropriate PPE (Personal protection equipment) when fitting this product. Although the mounting kit is designed to be DIY, if you have any doubts or concerns, contact an accredited fitment centre to carry out the work. Alu-Cab will not be liable for any injury to persons, and/or damage to products and/or vehicles.

1.1 Tools required to Fit Side Chair Carrier kit:

Tools	Purpose
10mm Spanner	Fastening Nuts and Bolts
10mm Ratchet	Fastening Nuts and Bolts
Size 4 Allen Key	Fastening Nuts and Bolts
Size 6 Allen Key	Fastening Nuts and Bolts
13mm Spanner	Fastening Nuts and Bolts
13mm Ratchet	Fastening Nuts and Bolts

1.2 Fitting the Side Chair Carrier Kit

Step 1: Inserting Roof Mounting Bolts

The first step for the fitment of the Side Chair Carrier Kit is to insert 4x Hex Bolts into the Nut Slots in the roof of your Canopy. Depending on where you would like your Chair Carrier to be placed, closer to the inside of the Canopy or closer to the rear door/tailgate, you can choose which Roof Nut Slots to use. The bolts will be 300mm apart (2 Nut Slots next to each other) as shown. Space them roughly in rectangular spacing of the mounting brackets on top of the Chair Carrier. See below images:



Figure 1: Inserting Hex Bolts into roof Nut Slot



Figure 2: Hex Bolt Positioning to match the Mounting Brackets

Step 2: Side Mounting Brackets

The next step in the fitment process is to install the Side Mounting Brackets into the side nut slots of the Canopy frame. These need to be below where you inserted the Hex Bolts into the Roof Nut Slots, and to horizontally spaced to correspond with the provided slots in the Chair Carrier Shelf Mounting Bracket. See below images:



Figure 3: Side Mounting Bracket

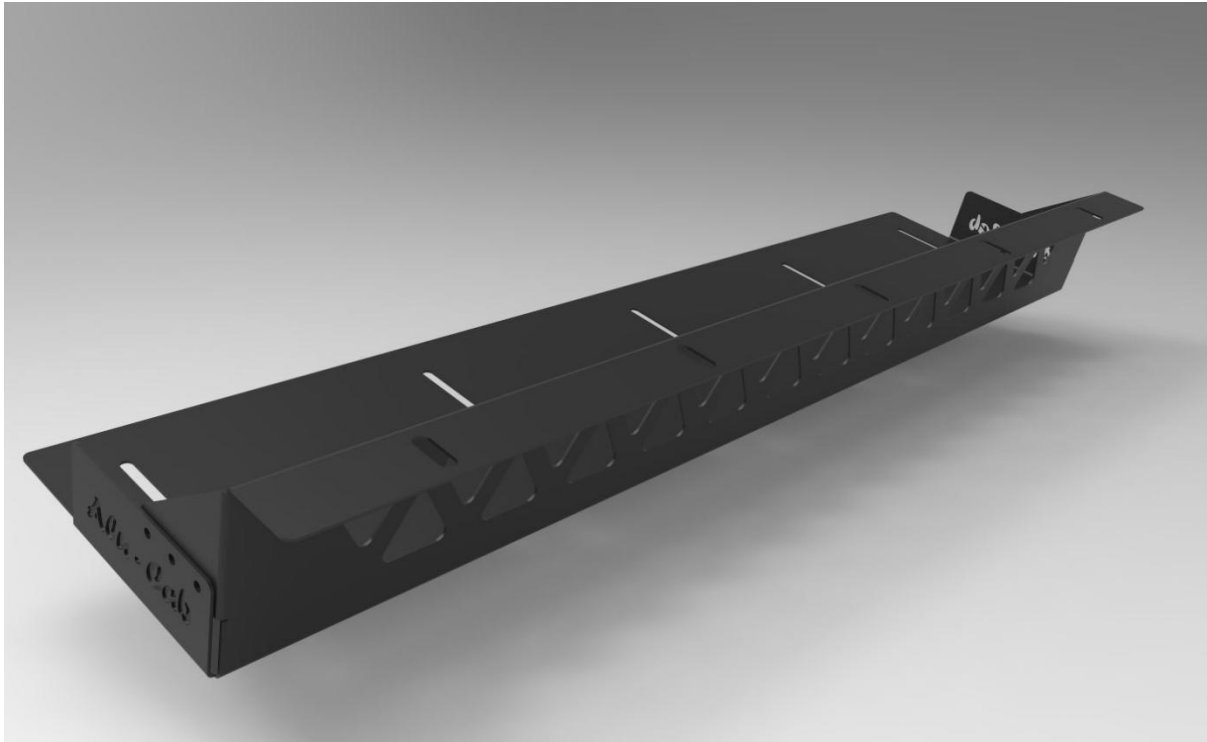


Figure 4: Chair Carrier Shelf Mounting Bracket



Figure 5: Hex Bolts inserted into Canopy Side Nut Slot and Bracket Positioned



Figure 6: Canopy Side Nut Slot and Mounting Bracket



Figure 7: Use Washers



Figure 8: Finger Tighten Nyloc Nuts onto the Bolts

Step 3: Top/Roof Mounting

For this step we just need to ensure that the Bolts fastening the Shelf Brackets are only finger tight, allowing them to slide along their slots which will provide the adjustment needed for you to setup your Chair Carrier suiting your specific Canopy and configuration. These adjustments will control the height level of your Chair Carrier shelf to match the Side Nut Slots of the Canopy, as well as how close the Chair Carrier sits to the side of your Canopy.



Figure 9: Chair Carrier Shelf Bracket



Figure 10: Chair Carrier Shelf Mounting Bracket

Step 4: Top/Roof Mounting

Our next step is to mount the Chair Carrier to the inside of the roof of our Canopy, using the Hex Bolts we inserted there earlier, this step is easiest with 2 people. We need to place the Chair Carrier in the Canopy and lift it upwards towards the Bolts in the Nut Slots, and locate and place the Bolts through the Slots in the Mounting Brackets on top of the Chair Carrier. Once you have at least 2 Bolts positioned through the Mounting Brackets you can add Washers and Nyloc Nuts and finger tighten them, this will allow you to let the Chair Carrier hang suspended so you can easier locate and fasten the remaining 2 bolts. Before fully tightening the bolts you can position the Chair Carrier as close or far away from the side of the Canopy as you prefer. See below images:



Figure 11: Top Mounting Brackets for Chair Carrier



Figure 12: Top Mounting Brackets for Chair Carrier



Figure 13: Place Nut Caps on the exposed Nuts



Figure 14: Fully fastened Roof Mounts

Step 5: Fasten Side Mount to Canopy

In this step we need to fasten the Shelf Mounting Bracket to the Canopy Side Mounting Brackets to fasten our Chair Carrier securely to the side of the Canopy. Firstly we will align the Shelf Mounting Bracket Slots with the corresponding slots on the Canopy Side Mounting Brackets, we will fasten these using the provided Button Head Cap Screw with a washer, secured with a washer and Nyloc Nut on the opposite end. Once this is done we can fully tighten the Canopy Side Mounting Brackets and finish it with Nut Caps. See below images:



Figure 15: Button Head Cap Screw securing the Chair Carrier Shelf Mounting Bracket to the Canopy Side Mounting Bracket



Figure 16: Chair Carrier Shelf Mounting Bracket to the Canopy Side Mounting Bracket Fastened



Figure 17: Side Mounting Completed with Nut Caps

Step 6: Tighten Shelf Bracket to Chair Carrier

For this step we now need to completely fasten/tighten the Bolts that hold the Shelf Bracket to the Chair Carrier. Lift and adjust the Shelf Bracket so that it is level with the Load Bin Base/Decking, once it is level you can fasten the Shelf fully, completing it with Nut Caps.

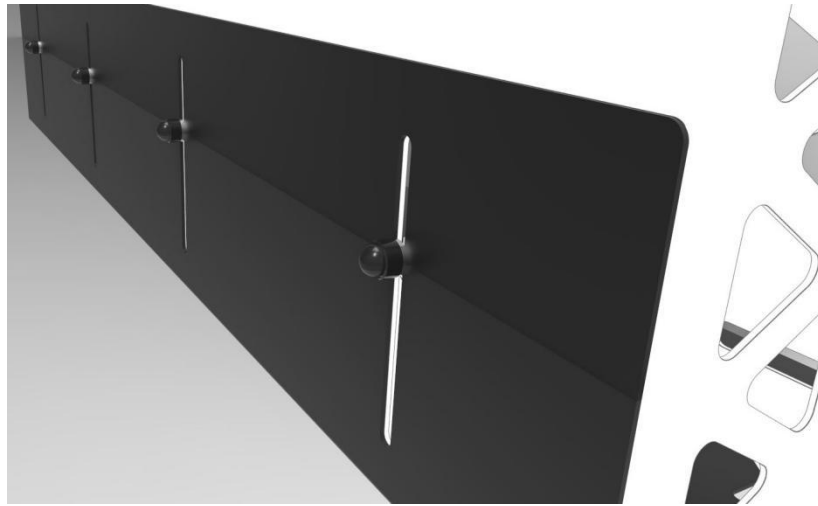


Figure 18: Secured Shelf to Chair Carrier

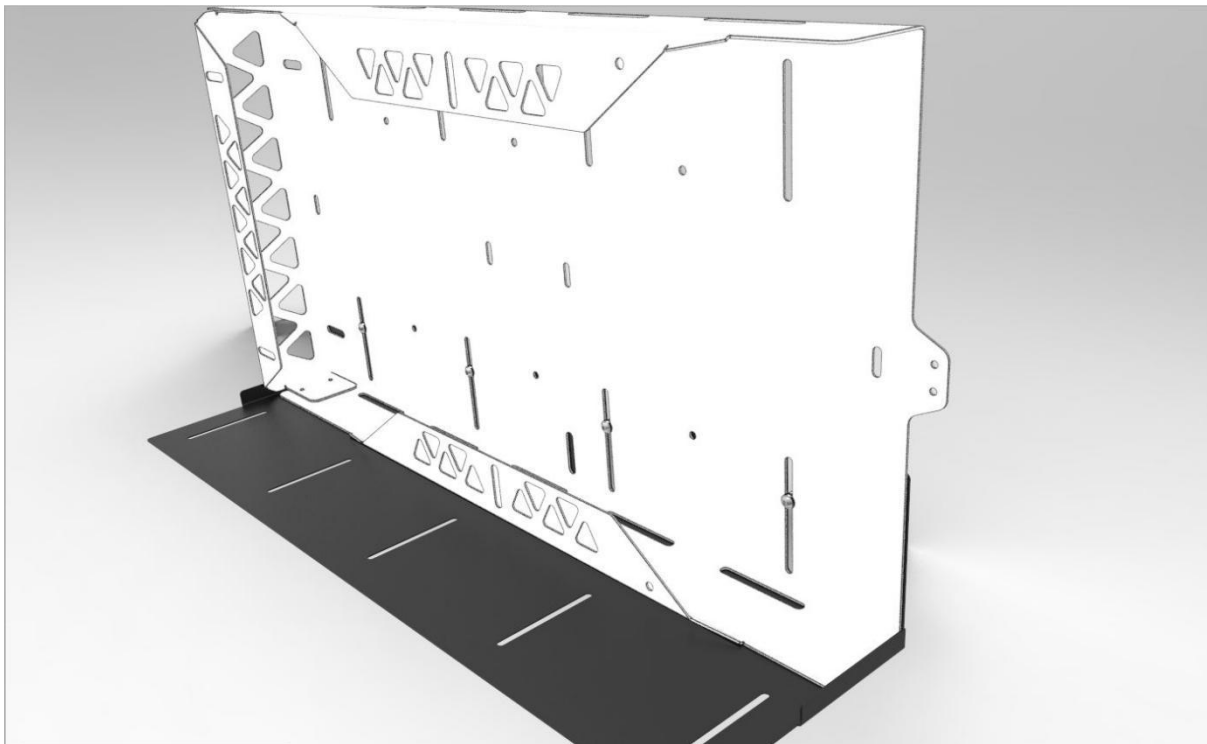


Figure 18: Secured Shelf to Chair Carrier

Step 7: Tighten Shelf Mounting Bracket to Shelf

For this last step we can fully tighten/fasten the Bolts located in their slots that join the Shelf Mounting Bracket to the Shelf. There will still be slight adjustment here, and we can align the back of the Chair Carrier as close to 90 Degrees/upright as possible, then tighten the bolts fully secure the Shelf

Mounting Bracket and Shelf. We now just add Nut Caps underneath fully completing the Chair Carrier install.

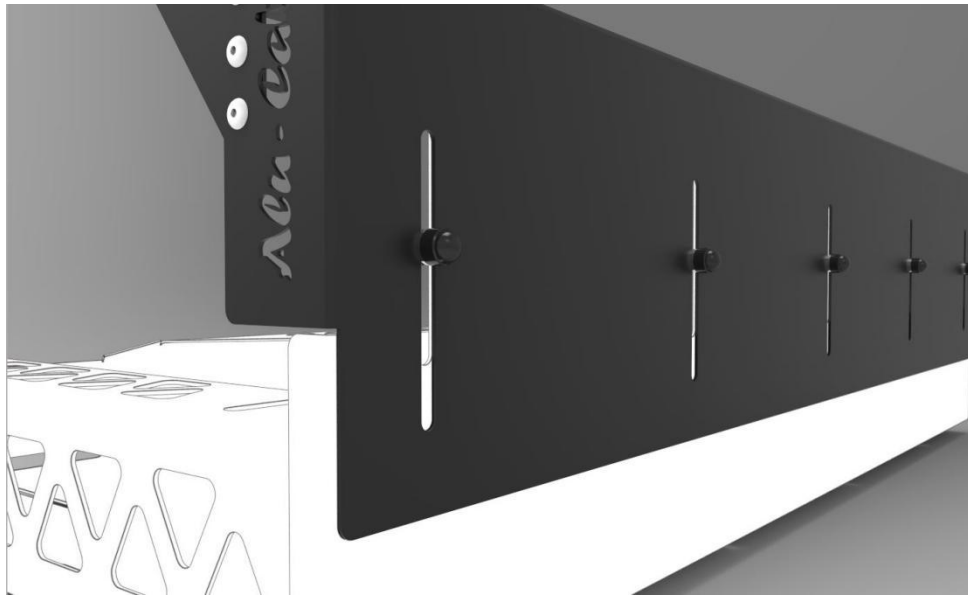


Figure 19: Fully Tightened Shelf and Shelf Mounting Bracket

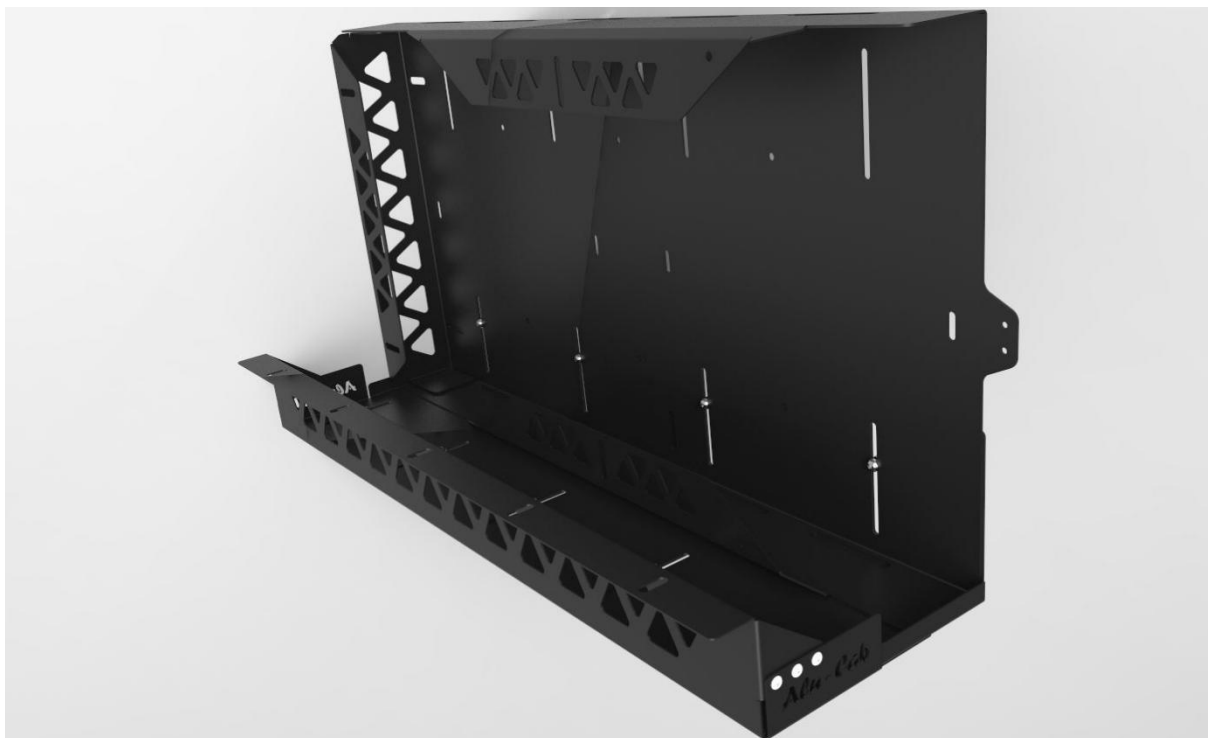


Figure 19: Fully Tightened Shelf, Shelf Mounting Bracket and Chair Carrier









***NB: Please note, the fitment for the single chair carrier is exactly the same as in this instruction, just with 2 mounting points to the roof instead of 4 as shown here.**